

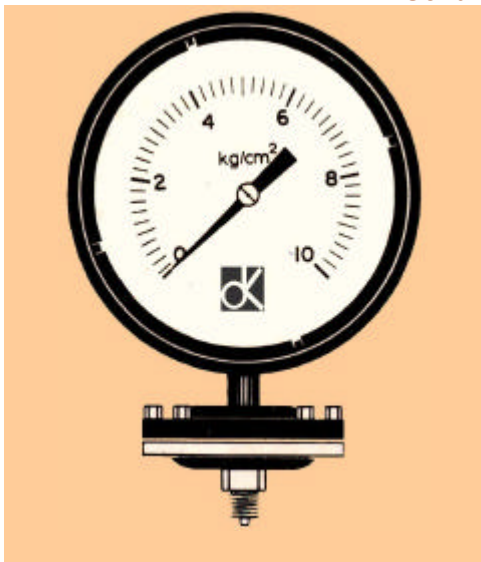
PRESSURE GAUGE

Bourdon Type PRESSURE, VACUUM & COMPOUND GAUGE



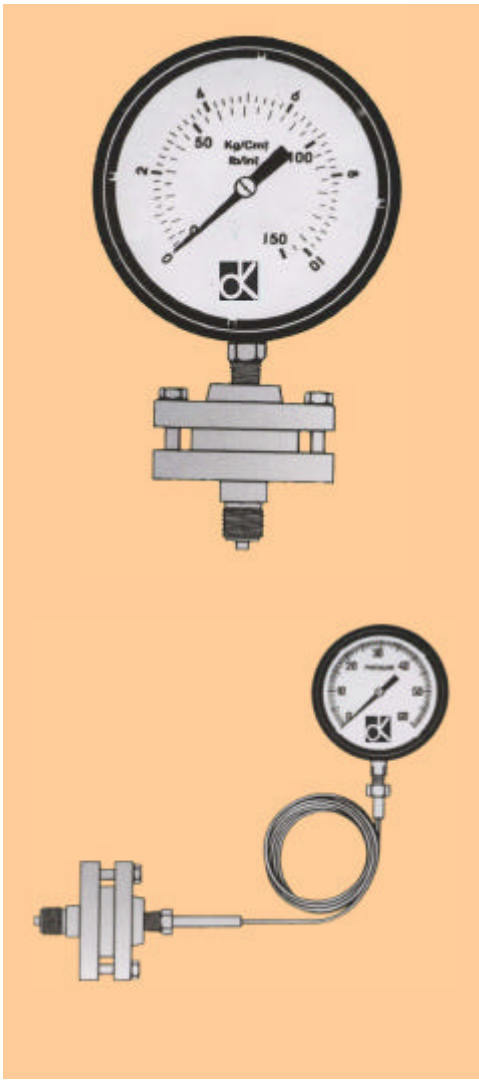
1. **PRESSED STEEL PRESSURE GAUGE**
 Dial Size: 50,63,100 & 150 mm.
 Bourdon Movement & Block: Non Ferrous
 Accuracy: $\pm 2\%$. Pressed Steel Case & Cover.
 Connection: 3/8" BSP
 Ranges: 1 Kg / cm² to 600 Kg / cm² with psi scale.
 -760 mmHg (Vacuum) and compound ranges
2. **DUST & DAMP PROOF PRESSURE GAUGE**
 Dial Size: 100 & 150 mm.
 Bourdon Movement & Block: Non-Ferrous.
 Accuracy: $\pm 1\%$.
 Cast Aluminium Case with Screwed Inner bezel of ABS plastic.
 Connection: 3/8" BSP
 Mounting: Projection / Direct with bottom entry.
 Ranges: 1 Kg / cm² to 250 Kg / cm² with psi scale.
 -760 mmHg (Vacuum) and compound ranges
3. **CAST ALUMINIUM WEATHERPROOF PRESSURE GAUGE**
 Dial Size: 100, 150 & 250 mm.
 Bourdon: Non ferrous / SS 316. Movement: Non ferrous / SS 304.
 Block: Extruded brass / SS 316.
 Accuracy: $\pm 1\%$. Micro zero adjustment pointer & blow out disc.
 Case: Cast aluminium weatherproof with screwed Inner bezel of ABS plastic.
 Connection: 3/8" BSP, 1/2" NPT, 1/2" BSP (M).
 Mounting: Direct / Projection with bottom entry & flush panel with back entry.
 Ranges: 0-1, 2, 4, 6, 7, 10, 14, 16, 21, 28, 42, 60, 70, 100, 160, 200, 250, 400, 600, 1000 Kg / cm²
 -760 mmHg and compound ranges
4. **OTHER BOURDON TYPE GAUGES**
 Ammonia, Freon, Oxygen, Accetylene & Depth Gauges.
5. **ACCESSORIES**
 Single & Double electric contact, Syphon, Gaugecock, Snubbers and Glycerine filling.

Schaffers DIAPHRAGM & CAPSULE GAUGE



- | | | |
|----------------------|---|---|
| Dial Size | : | 100 & 150 mm |
| Accuracy | : | $\pm 1.5\%$ of range span |
| Sensing Element | : | Spring Steel / Stainless Steel Diaphragm |
| Diaphragm Protection | : | Teflon, Silver foil (for chlorine) Stainless Steel |
| Movement | : | Non ferrous / Stainless Steel |
| Top Chamber | : | Cast Aluminium / Cast Iron |
| Bottom Chamber | : | Cast Iron, SS 304 / 316 AISI |
| Case | : | Cast Aluminium / Cast Iron, weatherproof stove enameled black with screwed bezel |
| Connection | : | 1/2" BSP (M) |
| Mounting | : | Direct with bottom / back entry |
| Ranges | : | 1, 2, 4, 7, 10, 14, 16, 21, 25 Kg / cm ² ,
-760 mmhg and compound – 1 + 25 Kg / cm ² |
| Capsule | : | (Low pressure range): 100, 250, 400, 600, 1000, 1600, 2000, 2500, 4000, 6000 mmwc |

SEALED DIAPHRAGM GAUGE



Dial	: 100 mm and 150 mm
Accuracy	: $\pm 1\%$ of full Scale
Case and Bezel	: Die cast aluminium weatherproof case as per ISA-RP8. 1-2B, stove enameled black with screwed type inner bezel made of ABS plastic Optional: Epoxy grey painting and stainless steel
Bourdon	: Non ferrous, AISI 316 SS
Movement	: Brass and AISI 304 SS
Block	: Brass and AISI 316 SS with
Mounting	: Projection with bottom entry Direct on sealed unit with bottom entry, Flush panel with back entry
Pointer	: Micrometer with zero adjuster type
Capillary	: 3.5 mm OD solid drawn stainless steel capillary
Standard Ranges	: 0-1, 1-6, 2, 2.5, 4, 6, 10, 16, 25, 40, 60, 100, 160, 250, 400, 600 Kg / cm ² vacuum & compound
Temperature	: Upto 150°C with Silicon oil as Sealing medium and 300°C with mercury
Diaphragm Material	: AISI 316 SS
Diaphragm Protection	: Teflon coating (optional)
Top Chamber	: SS 304
Bottom Chamber	: SS 316
Connection	: $\frac{1}{2}$ " BSP & $\frac{1}{2}$ " NPT (M) Optional – flange as per BS, ASA & DIN Standard

MUD GAUGE

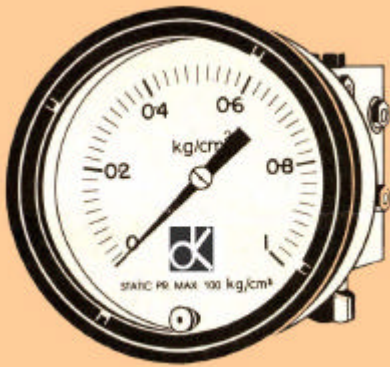


To meet the demand of oil exploration and refineries 'DKI' has developed a gauge for the pressure measurement of 'Crude Oil'. The gauge is designed as rugged and dependable keeping in view of application requirement of oil industries.

Technical Specifications

Type	Diaphragm Sealed
Accuracy	$\pm 1\%$ Of Range Span
Pressure Gauge	
Dial Size	150 mm
Dial Material & Colour	Aluminium Stove Enameled White
Dial Marking	Black
Window	Perspex / Toughened Glass
Bourdon Tube	AISI 316 Ss
Material	
Movement Material	AISI 304 Ss
Case & Bezel	Gun Metal Casting, Weather Proof, Glycerine Filled
Mounting & Entry	Direct With Bottom
Range In Kg/Cm ²	0 – 160, 250, 400, 600, 800 & 1000
Sealed Unit	
Sensing Element	Highly Corrosion Resistance Elastomer Cup
Chamber Material	Stainless Steel
Sealing Fluid	Silicone Oil
Process Connection	2" BSP Or NPT (M)
Process Connection	Stainless Steel
Material	

DIFFERENTIAL PRESSURE GAUGE



Dial Size	: 150 mm
Standard Ranges	: 0-400, 600, 1000, 1600, 2500, 4000 and 6000 mm wc. 0-0.6, 1, 1.6, 2, 2.5, 4, 6, 10, 16 and 25 bar / Kg / cm ²
Max. Static Pressure	: 100 bar / Kg / cm ²
Process Connection	: ¼" NPT (Female) Standard. Other connection are available adaptor
Accuracy	: ± 1.5% of range span
Sensing Element	: Diaphragm of SS 316 upto 2.5 bar / Kg / cm ² . Above 2.5 bar / Kg / cm ² upto 25 bar / Kg / cm ² diaphragm is of alloy steel
Chamber Material	: AISI 304 SS
Mounting	: Direct with bottom entry. Flush panel with bottom entry / back entry
Standard Fitment	: 1) Over range relief valve 2) External zero adjustment
Accessories Available	: ❖ Electric Contact ❖ Adjustable pulsation dampner ❖ Gauge cock ❖ Syphon ❖ Capillary ❖ Sealed Separator (in this case no equalizer valve is provided) ❖ Three way manifold made of SS 304 / 316

DRAUGHT GAUGE



Dial Size	: 150 x 78 mm & 200 x 104 mm
Sensing Element	: Non ferrous / SS Capsule
Accuracy	: ± 1%
Movement	: Brass
Block	: Brass / SS 316
Case	: Fabricated Steel. Stove enameled black
Connection	: ¼" BSP (M)
Mounting	: Flush Panel back entry
Dial Orientation	: Vertical / Horizontal
Ranges	: For pressure 0-6000 mm wc upto 0-25 mm wc For Suction – 6000 mm wc to 0, upto –25 mm wc to 0 For Compound –300 mm to +300 mm wc upto –15 +15 mm wc



D. K. Instruments

69A, Selimpur Road, Dhakuria,
Kolkata – 700 031, West Bengal, India.

Ph. No.: 91-33- 2405 0944, Fax: 91-33-2415 2311.

E-mail: info@dkinstruments.co.in, Url: www.dkinstruments.co.in

Marketed By: